

ELIE SAAB

À VIE

AT THE FIELDS

PLANS BROCHURE



Developer Name: G&CO Real Estate Development LLC - FZ
Project Name: The Fields at D11 - MBRMC
Project RERA No.: 1612
Location: Meydan, Dubai
Branded: Yes
Ownership: Freehold
Estimated Service Fees: 3.5 AED per sqft on plot area

THE FIELDS COMMUNITY MALL

In the heart of Meydan lies The Fields, a master gated community minutes away from Downtown, Dubai. The Community Mall caters to its residents with a 42+ retail outlet mix comprising of a mini mart, chemist, florist, coffee shop, juice bar, party supplies store, exchange, nail salon, hair salon, barber, health centre, and pet shop.

Additionally, the Community Mall comprises of The Fields Club House. Here the residents can enjoy the services of a gym, wellness centre, yoga area, kids play area (indoor/outdoor), residents lounge, children's party hall, and outdoor gardening area.



ELIE SAAB À VIE (ZONE 2)

ELIE SAAB À VIE - At The Fields offers a holistic, connected and integrated lifestyle within a community. A mix of amenities and activities provide a seamless transition between work, life and play while offering the best of Dubai in one place.

There are 4 common areas offering a multitude of experiences:

- Swimming pools.
- Yoga Lounge
- Barbecue Area
- Jogging Track
- Kids park
- Tennis Court
- Lounging spaces and serenity seating

UNIT MIX & SIZE DETAILS

BR TYPE	MIX %	TOTAL SIZE (SQFT)
3 BR - Mid	15%	2,775
4 BR - Mid	55%	3,163
4 BR - End	30%	3,562

KITCHEN INCLUDED

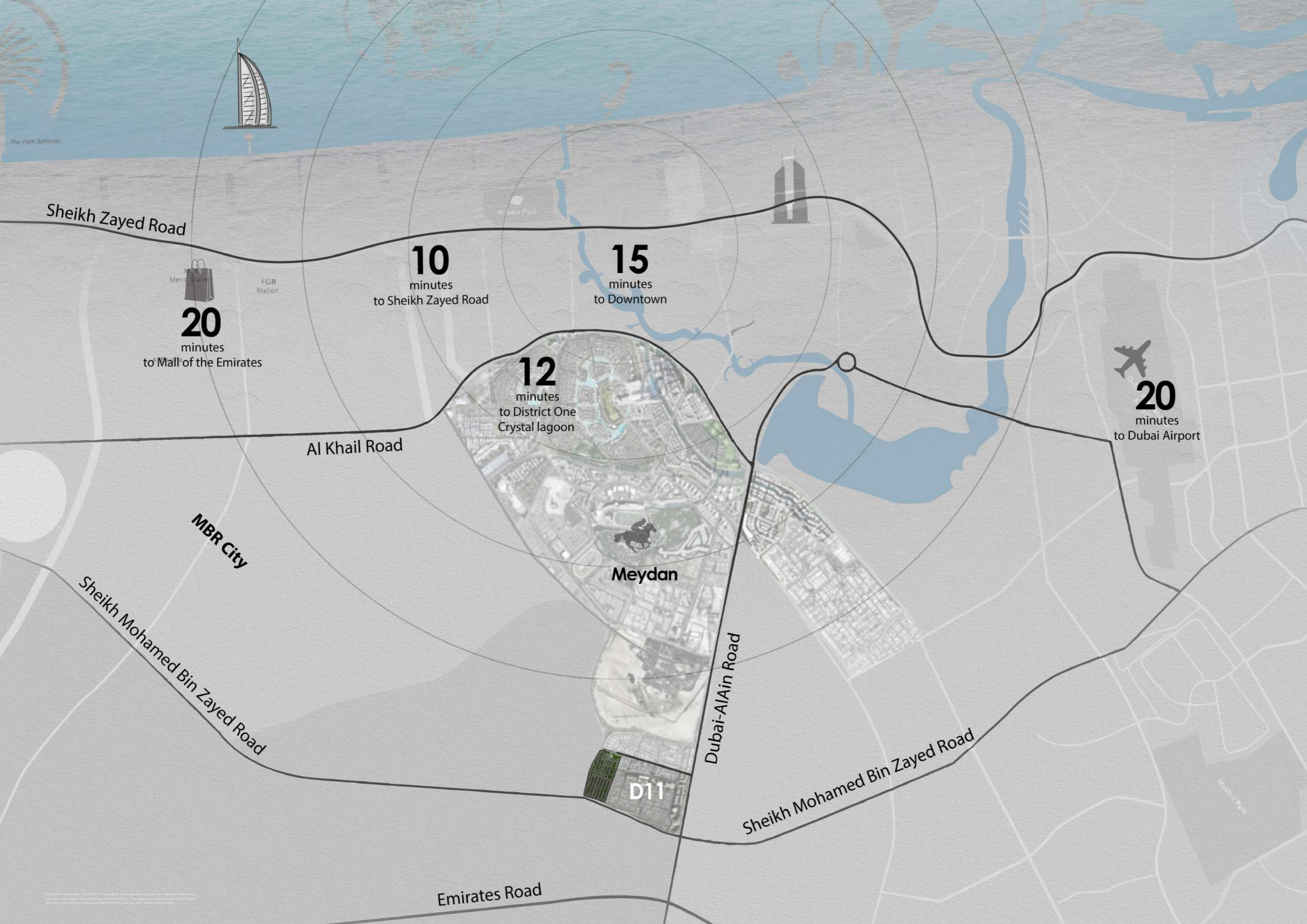
WHITE GOODS

Hob	Cook/Stove
Oven	Fridge/Freezer Built In

ESCROW ACCOUNT DETAILS

BANK ACCOUNT DETAILS

A/C Name	Escrow The Fields
Bank	Bank of Sharjah
Branch	Al Garhoud
SWIFT Code	SHARAEAS
IBAN	AE73 0120 0000 0143 4278 906
A/C Number	0120 000001434278 278906
Currency	AED



The Palm Jumeirah

Sheikh Zayed Road



20
minutes
to Mall of the Emirates

FGB Station

10
minutes
to Sheikh Zayed Road

Al Safa Park

15
minutes
to Downtown

12
minutes
to District One
Crystal lagoon

Al Khail Road



20
minutes
to Dubai Airport

MBR City

Meydan

Sheikh Mohamed Bin Zayed Road

Dubai-Al Ain Road

D11

Sheikh Mohamed Bin Zayed Road

Emirates Road

Disclaimer: All images used are for illustrative purposes only and do not represent the actual site. Features, size, location, shape, and functionality. The developer reserves the right to make changes / alterations at its absolute discretion without any liability or restriction.

THE FIELDS COMMUNITY MALL



Disclaimer: All images used are for illustrative purposes only and do not represent actual construction. The design, features, specifications, fittings, and furnishings are subject to change without notice. © 2023 The Fields Community Mall. All rights reserved.



Disclaimer: All images used are for illustrative purposes only and do not represent the actual site, features, specifications, fittings, and furnishings. The developer reserves the right to make changes / alterations at its absolute discretion without any liability whatsoever.



Disclaimer: All images used are for illustrative purposes only and do not represent the final size, features, specifications, fittings, and furnishings. The developer reserves the right to make revisions / alterations, at its absolute discretion, without any liability whatsoever.

THE PLANS

ELIE SAAB

VIE

AT THE FIELDS

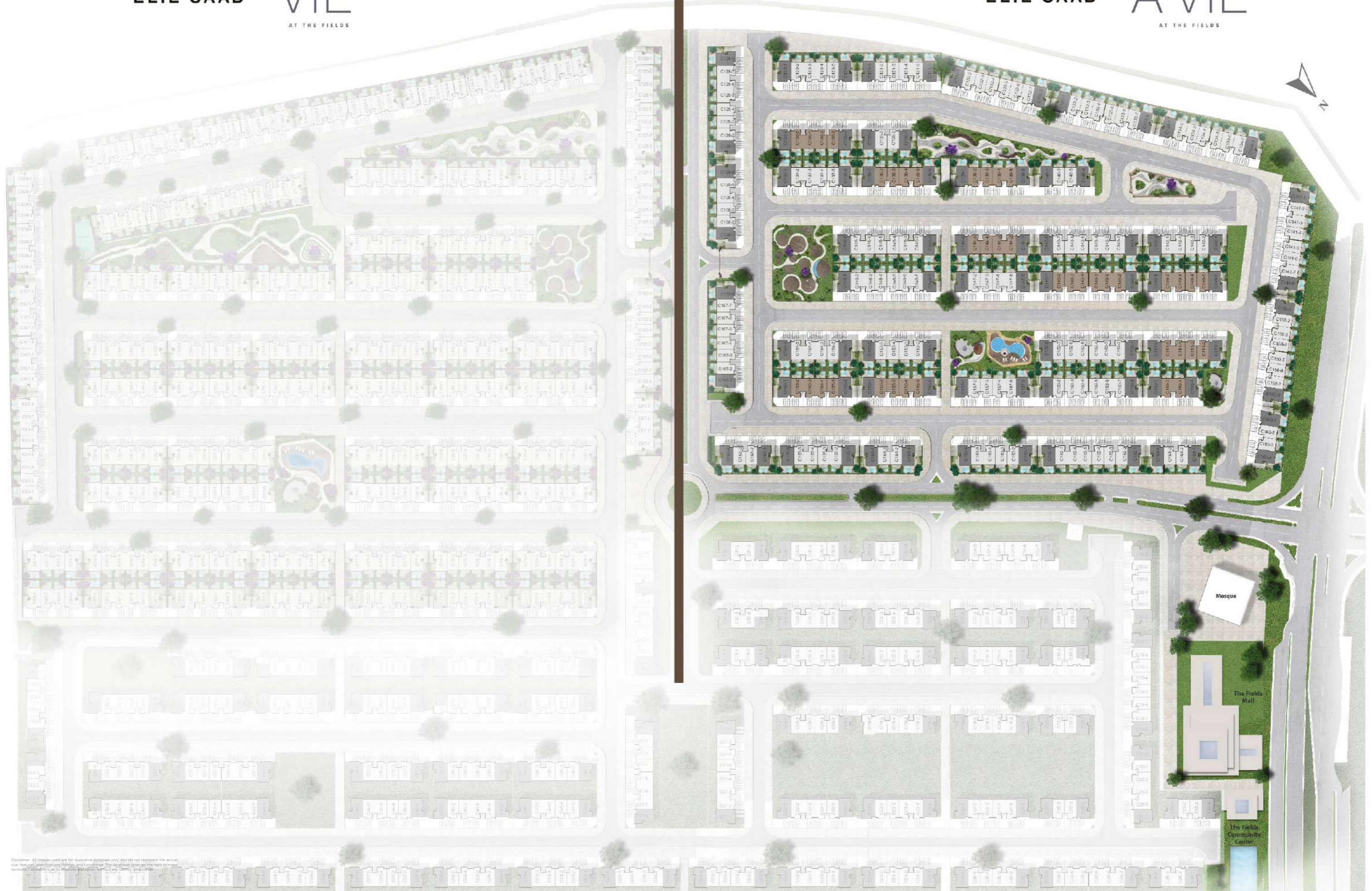
ELIE SAAB

À VIE

AT THE FIELDS



Disclaimer: All images used are for illustrative purposes only and do not represent the actual size, features, specifications, finishes, and furnishings. The developer reserves the right to make changes without notice. © 2024 Elie Saab Architecture. All rights reserved.



ELIE SAAB

À VIE

AT THE FIELDS



- Calm Park**
- Kids Area
 - BBQ Island
 - Serenity Seating
 - Pedestrians Pathways

- Urban Park**
- Family Lounge
 - Lawn Area

- Junior Activities Park**
- Kids Park
 - Family Lounge
 - Lawn Area
 - Pedestrian Pathways

- Pool Area**
- Seating Area
 - Pool Deck
 - Decorative Sculpture
 - Pedestrian Pathways
 - Lawn Area

- 3 BEDROOM
- 4 BEDROOM
- 4 BEDROOM (END)



Disclaimer: All images used are for illustrative purposes only and do not represent the actual site features, specifications, fittings, and furnishings. The developer reserves the right to make revisions / alterations, at its absolute discretion, without any liability whatsoever.



THE
FLOOR PLANS



GRANDE PLUS UNIT
GROUND FLOOR PLAN
*POOL IS NOT INCLUDED



GRANDE PLUS UNIT
FIRST FLOOR PLAN

END UNIT GRANDE PLUS

NO. OF BR	4 BR END UNIT
BUILT UP AREA	2,804 SQFT
UNCOVERED TERRACES	333 SQFT
GARAGE AREA	425 SQFT
TOTAL AREA	3,562 SQFT
PLOT SIZE	3,102 SQFT





GRANDE UNIT
GROUND FLOOR PLAN
*POOL IS NOT INCLUDED



GRANDE UNIT
FIRST FLOOR PLAN

MID UNIT GRANDE

NO. OF BR	4 BR MID UNIT
BUILT UP AREA	2,403 SQFT
UNCOVERED TERRACES	382 SQFT
GARAGE AREA	378 SQFT
<hr/>	
TOTAL AREA	3,163 SQFT
PLOT SIZE	2,016 SQFT





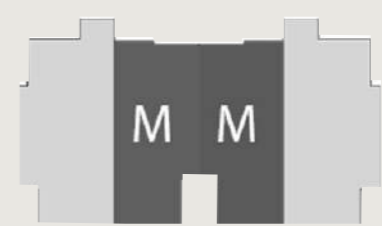
ÉLÉGANTE UNIT
GROUND FLOOR PLAN
*POOL IS NOT INCLUDED



ÉLÉGANTE UNIT
FIRST FLOOR PLAN

MID UNIT ÉLÉGANTE

NO. OF BR	3 BR MID UNIT
BUILT UP AREA	2,084 SQFT
UNCOVERED TERRACES	313 SQFT
GARAGE AREA	378 SQFT
TOTAL AREA	2,775 SQFT
PLOT SIZE	2,015 SQFT



ELIE SAAB

À VIE

AT THE FIELDS

KEY CONTRIBUTORS

G&Co.

Fortune5

meydan

No. of BR	4 BR
Built up Area	MID UNIT
Uncovered Terraces	2,403 SqFt
Garage area	382 SqFt
Total Area	3,163 SqFt
Plot Size	2,016 SqFt



GRANDE UNIT GROUND FLOOR PLAN

*Pool is not included

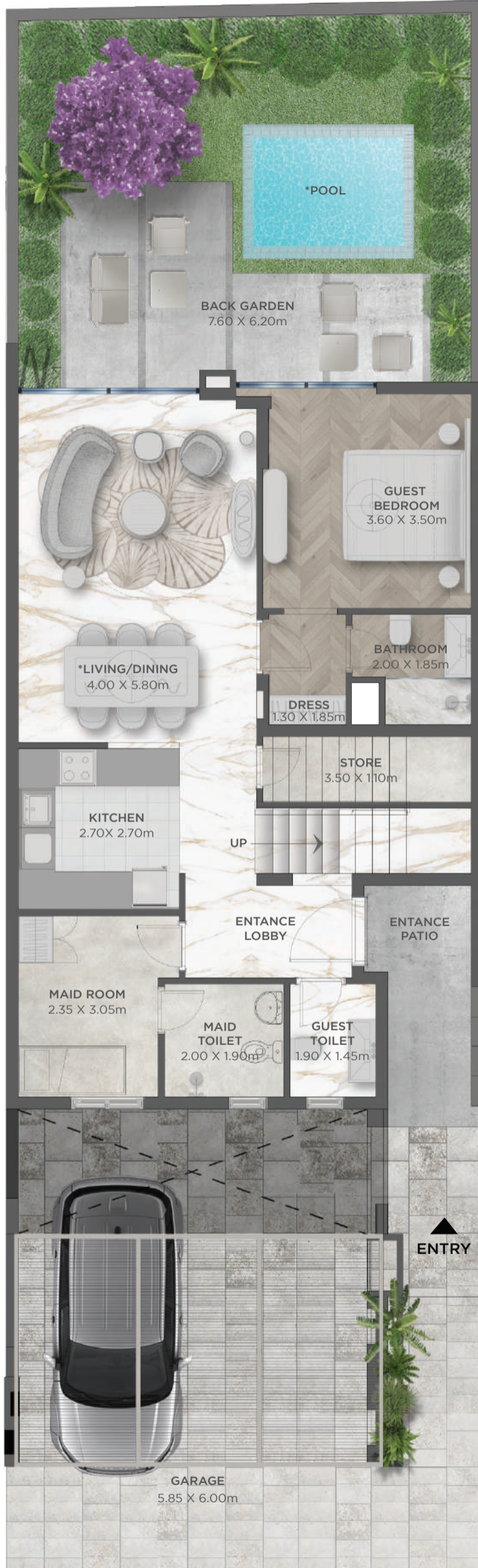


GRANDE UNIT FIRST FLOOR PLAN

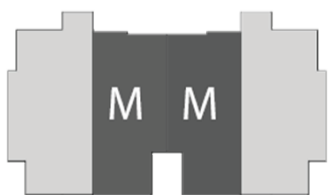
*Pool is not included

À VIE

AT THE FIELDS



No. of BR	3 BR MID UNIT
Built up Area	2,084 SqFt
Uncovered Terraces	313 SqFt
Garage area	378 SqFt
Total Area	2,775 SqFt
Plot Size	2,015 SqFt



ÉLÉGANTE UNIT GROUND FLOOR PLAN

*Pool is not included



ÉLÉGANTE UNIT FIRST FLOOR PLAN

*Pool is not included

À VIE

AT THE FIELDS



No. of BR	4 BR
Built up Area	END UNIT
Uncovered Terraces	2,804 SqFt
Garage area	333 SqFt
Total Area	425 SqFt
Plot Size	3,562 SqFt
	3,102 SqFt



GRANDE PLUS UNIT GROUND FLOOR PLAN

*Pool is not included



GRANDE PLUS UNIT FIRST FLOOR PLAN

*Pool is not included